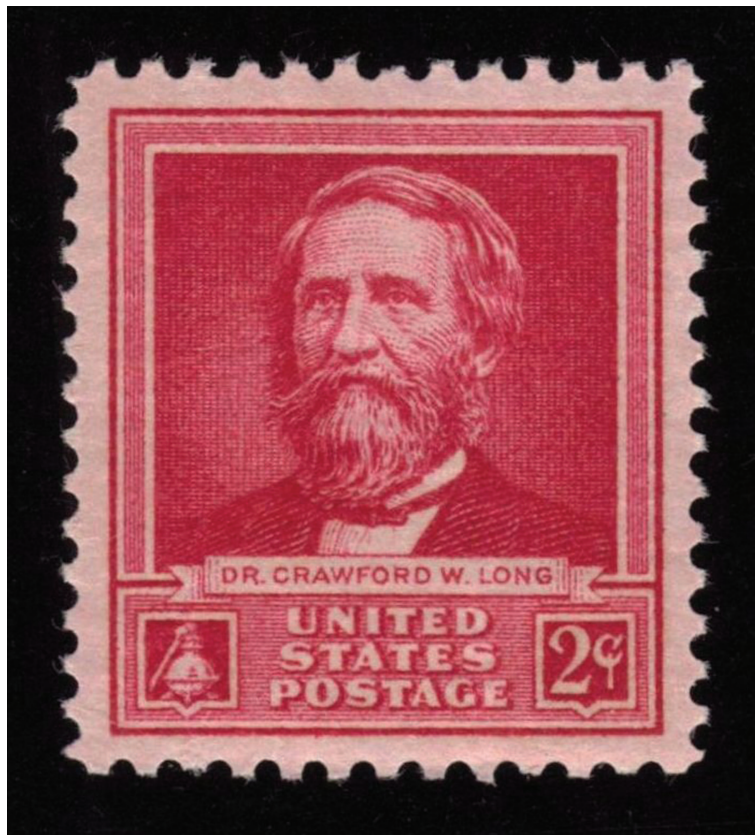


10. Baigent C, Keech A, Kearney PM, Blackwell L, Buck G, Pollicino C, Kirby A, Sourjina T, Peto R, Collins R, Simes R, Cholesterol Treatment Trialists' (CTT) Collaborators: Efficacy and safety of cholesterol-lowering treatment: Prospective meta-analysis of data from 90,056 participants in 14 randomised trials of statins. *Lancet* 2005; 366:1267-78
11. Horn SD: Validity, reliability and implications of an index of inpatient severity of illness. *Med Care* 1981; 19:354-62
12. Lorence DP, Ibrahim IA: Benchmarking variation in coding accuracy across the United States. *J Health Care Finance* 2003; 29:29-42
13. HCUP Clinical Classifications Software (CCS) for ICD-9-CM, Healthcare Cost and Utilization Project (HCUP). Agency for Healthcare Research and Quality, Rockville, MD. 2000-2003
14. Houchens RL, Elixhauser A, Romano PS: How often are potential patient safety events present on admission? *Jt Comm J Qual Patient Saf* 2008; 34:154-63

ANESTHESIOLOGY REFLECTIONS

The 2-cent Crawford Long Postage Stamp



In Jefferson, Georgia, on what we now celebrate as “Doctors’ Day,” on March 30 of 1842, pharmacist-physician Crawford Williamson Long (1815–1878) etherized James Venable for removal of a neck tumor. This anesthetic occurred more than 4 yr before (but was publicized 3 yr after) Morton’s public ether demonstration in Boston. The U.S. Postal Service used an 1873 photograph of Long as inspiration for engraving its postage stamp honoring the Georgian in 1942. Ironically, since national postal rates that year were 3 cents for a typical enveloped letter, one Crawford Long stamp could only fund local delivery within the town limits of Jefferson. Those seeking postal delivery beyond Jefferson were forced to stick two or more Long stamps on each of their envelopes. (Copyright © the American Society of Anesthesiologists, Inc. This image appears in color in the *Anesthesiology Reflections* online collection available at www.anesthesiology.org.)

George S. Bause, M.D., M.P.H., *Honorary Curator, ASA’s Wood Library-Museum of Anesthesiology, Park Ridge, Illinois, and Clinical Associate Professor, Case Western Reserve University, Cleveland, Ohio.* UJYC@aol.com.